

FIT-TECH™

FLOORING By DOLLAMUR



HIGH PERFORMANCE ATHLETIC
ROLL and **INTERLOCKING TILE**
RUBBER FLOORING

ROLL FLOORING

Durable, Virtually Seamless Shock Absorbing Flooring

The FIT-TECH™ composite roll flooring offers wear resistance and stable footing making it the ultimate choice for top training facilities.

48" wide roll x ANY length, fit wall-to-wall

COLOR DENSITY
10%

1/4"
THICKNESS



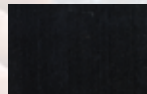
BLACK
FTROLBLK14-48



GREY10
FTROL10GRY14-48



BLUE10
FTROL10BLU14-48



BLACK
FTROLBLK16-48



GREY10
FTROL10GRY16-48



BLUE10
FTROL10BLU16-48



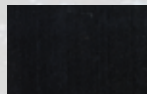
BLUE-GREY10
FTROL10BLUGRY16-48



TAN10
FTROL10TAN16-48



BRICK10
FTROL10BRK16-48



BLACK
FTROLBLK16-48



GREY10
FTROL10GRY38-48



BLUE10
FTROL10BLU38-48



BLUE-GREY10
FTROL10BLUGRY38-48



TAN10
FTROL10TAN38-48



BRICK10
FTROL10BRK38-48



GREEN10
FTROL10TAN38-48



YELLOW10
FTROL10YEL38-48



PURPLE10
FTROL10PRP38-48

COLOR DENSITY
20%

3/8"
THICKNESS



GREY20
FTROL20GRY38-48



BLUE20
FTROL20BLU38-48



RED20
FTROL20RED38-48



BROWN20
FTROL20BRN38-48



GOLD20
FTROL20GLD38-48



WHITE20
FTROL20WHT38-48



GREY-WHITE-BLUE20
FTROL20GWB38-48

COLOR DENSITY
35%

3/8"
THICKNESS



GREY35
FTROL35GRY38-48



BLUE35
FTROL35BLU38-48



GREEN35
FTROL35GRN38-48



RED35
FTROL35RED38-48



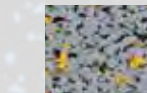
TAN35
FTROL35TAN38-48

COLOR DENSITY
95%

5/32"
THICKNESS



BROWN95
FTROL95BRN532-48



GREY-TAN95
FTROL95GRYTAN532-48



CHARCOAL GREY95
FTROL95CGR532-48



RED95
FTROL95RED532-48



TAN95
FTROL95TAN532-48



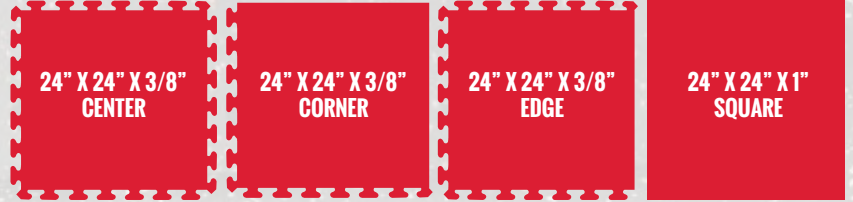
GREY95
FTROL95GRY532-48

RUBBER TILES

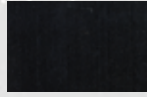
Flexible, Easy to Install Tile Flooring

Dollamur® FIT-TECH™ Interlocking and Square Rubber Tiles are an easy to install, durable alternative for your sport flooring needs. FIT-TECH™ Tiles can be laid over sub-floors or finished floors without adhesive.

SELECT YOUR TILE:
CENTER, CORNER,
EDGE or SQUARE



COLOR DENSITY
10%
3/8\"/>



BLACK
FTPUZBLK38-24



GREY10
FTPUZ10GRY38-24



BLUE10
FTPUZ10BLU38-24



TAN10
FTPUZ10TAN38-24



BRICK10
FTPUZ10BRK38-24

COLOR DENSITY
35%
3/8\"/>



GREY35
FTPUZ35GRY38-24



BLUE35
FTPUZ35BLU38-24



GREEN35
FTPUZ35GRN38-24



RED35
FTPUZ35RED38-24



TAN35
FTPUZ35TAN38-24

COLOR DENSITY
10%
1\"/>



BLACK
FTPUZBLK1-24



GREY10
FTPUZ10GRY1-24



BLUE10
FTPUZ10BLU1-24



TAN10
FTPUZ10TAN31-24



BRICK10
FTPUZ10BRK1-24

COLOR DENSITY
35%
1\"/>



GREY35
FTPUZL35GRY1-24



BLUE35
FTPUZ35BLU1-24



GREEN35
FTPUZ35GRN1-24



RED35
FTPUZ35RED1-24

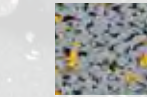


TAN35
FTPUZ35TAN1-24

COLOR DENSITY
95%
1\"/>



BROWN95
FTPUZL95BRN1-24



GREY-TAN95
FTPUZL95GRYTAN1-24



CHARCOAL GREY95
FTPUZL95CGR1-24



RED95
FTPUZL95RED1-24



TAN95
FTPUZL95TAN1-24



GREY95
FTPUZL95GRY1-24

REDUCER - 1" x 4" x 48"	Black FTRAMPBLK1-48	10% COLOR FTRAMP10ccc1-48	35% COLOR FTRAMP35ccc1-48	95% COLOR FTRAMP95ccc1-48
ADA RAMP	FTRAMPBLK1-48ADA			
ADHESIVE	PU350ADHESIVE-2.5G	PU350ADHESIVE-5G		
DOWEL	FT DOWELS			
DOWEL TOOL	FT DOWELTOOL			

Note: PU350 adhesive for Rubber flooring has a coverage area of 90 square feet per gallon with a 1/16" trowel.

SPECIFICATIONS

Roll Flooring

Standard Roll Width:	48" (1.22m)
Standard Reducer Dimensions:	1" X 4" x 48"
Standard Reducer Weight:	4 lbs. per reducer
ADA Reducer Dimensions:	1" X 12" x 48"
ADA Reducer Weight:	14 lbs. per reducer

PRODUCT PERFORMANCE

Density	ASTM D3676 (top layer)	65 - 80 pcf (depends on surface color)
Hardness	ASTM D2240 (Shore A)	65 +/- 5
Tear Strength	ASTM D624	70 pli min
Elongation	ASTM D412	> 150%
Tensile Strength	ASTM D412	> 200 PSI
Resistance to Chemicals	ASTM F925	No Change
Coefficient of Friction	ASTM D2047	> 0.95
Impact Insulation	Class (IIC) E492	> 50
Critical Radiant Flux	ASTM E648	Class II
LEED Qualification	Qualifies for Material and Resources Credit	

Interlocking and Square Tiles

Density	ASTM D3676	60 pcf
Hardness	ASTM D2240 (Shore A)	65 +/- 5
Tear Strength	ASTM D624	80 pli min
Elongation	ASTM D412	> 145%
Tensile Strength	ASTM D412	> 220 PSI
Flexibility	ASTM F137	1/4" Mandrel Pass
Resistance to Chemicals	ASTM F925	No Change
LEED Qualification	Qualifies for Material and Resources Credit	

FIT-TECH™
FLOORING By DOLLAMUR

**FREE Quotes and
Design Assistance**

800-520-7647

